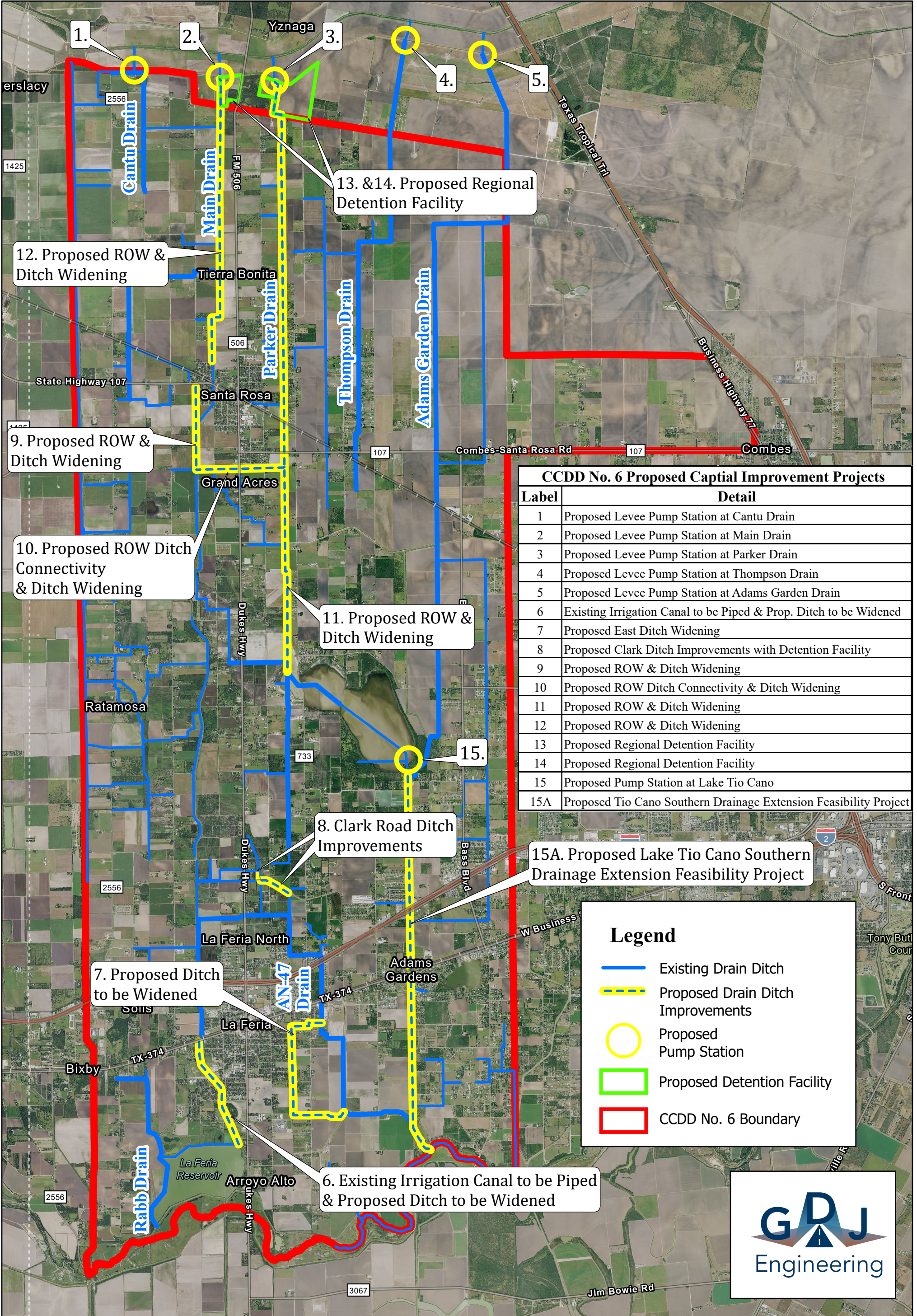




Cameron County Drainage District No. 6 Capital Improvement Projects



CCDD No. 6 Proposed Capital Improvement Projects	
Label	Detail
1	Proposed Levee Pump Station at Cantu Drain
2	Proposed Levee Pump Station at Main Drain
3	Proposed Levee Pump Station at Parker Drain
4	Proposed Levee Pump Station at Thompson Drain
5	Proposed Levee Pump Station at Adams Garden Drain
6	Existing Irrigation Canal to be Piped & Prop. Ditch to be Widened
7	Proposed East Ditch Widening
8	Proposed Clark Ditch Improvements with Detention Facility
9	Proposed ROW & Ditch Widening
10	Proposed ROW Ditch Connectivity & Ditch Widening
11	Proposed ROW & Ditch Widening
12	Proposed ROW & Ditch Widening
13	Proposed Regional Detention Facility
14	Proposed Regional Detention Facility
15	Proposed Pump Station at Lake Tio Cano
15A	Proposed Tio Cano Southern Drainage Extension Feasibility Project

Legend

- Existing Drain Ditch
- Proposed Drain Ditch Improvements
- Proposed Pump Station
- Proposed Detention Facility
- CCDD No. 6 Boundary

